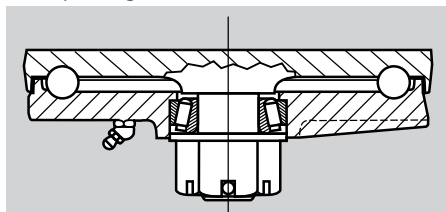


SERIES 12 EXTRA HEAVY DUTY

Capacities to 15,000 lbs.

Standard Features

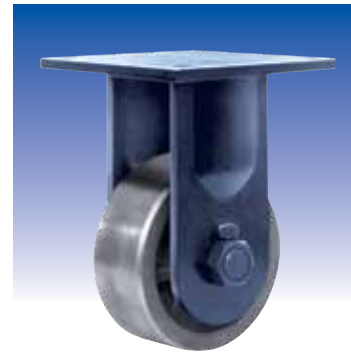
- **Top Plate/Yoke Base** - hot forged from SAE-1050 steel
- **Swivel Assembly** - Precision machined, flame hardened raceway for 5/8" diameter hardened steel ball bearings. Tapered thrust bearing
- **King Pin** - 1 1/4" diameter integrally forged, turned to 1" for a slotted adjusting nut



- **Wheel Bearings** - 1 1/4" I.D. tapered roller bearings in all wheels.
- **Side Forks** - 3/8" thick heavily embossed
- **Axle** - Specially ground 1 1/4" diameter, locked in position with indexing lance in side fork



S12104T-PS



R1283T-HD

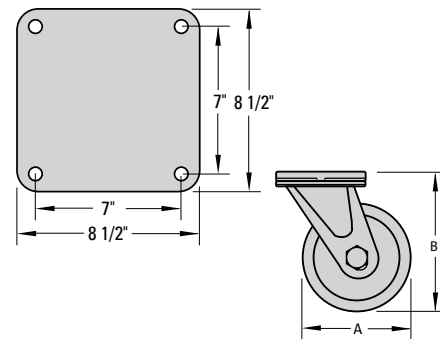
Optional Features

- **Heavy Duty 1, 2, or 4 Position Swivel Lock** (Suffix -1SL, -2SL or -4SL)



- **Secure Face Contact Brake** (Suffix -FCB)

Standard Top Plate



Wheel Specifications						Caster Specifications						Part Number	
Dia. "A" Inches (mm)	Tread Inches (mm)	Wheel Composition	Ref. to Page	Bearing Type	Axle Dia. Inches (mm)	Load Capacity lbs. (KGS)	Overall Height "B" Inches (mm)	Swivel Radius Inches (mm)	Attach. Bolt Inches (mm)	Approx. Shipping Wt.		Swivel Caster	Rigid Caster
										Swivel lbs. (KGS)	Rigid lbs. (KGS)		
8 (203)	3 (76)	Grey Iron (Heavy Duty)	85	Tapered Roller	1 1/4 (32)	6000 (2700)	12 (305)	7 1/2 (191)	5/8 (16)	66.0 (29.7)	47.0 (21.1)	S1283T-GI	R1283T-GI
		Ductile Iron	85	Tapered Roller		10000 (4500)				66.0 (29.7)	47.0 (21.1)	S1283T-HD	R1283T-HD
10 (254)	3 (76)	Grey Iron (Heavy Duty)	85	Tapered Roller	1 1/4 (32)	6000 (2700)	13 (330)	8 1/2 (216)	5/8 (16)	75.0 (33.7)	59.0 (26.5)	S12103T-GI	R12103T-GI
		Ductile Iron	85	Tapered Roller		10000 (4500)				77.0 (33.7)	62.0 (27.9)	S12103T-HD	R12103T-HD
		Mold-on Rubber (Cast Iron Core)	74	Tapered Roller		1000 (450)				65.0 (29.2)	50.0 (22.5)	S12103T-MR	R12103T-MR
		Severe Duty Polyurethane	79	Tapered Roller		3000 (1350)				65.0 (29.2)	50.0 (22.5)	S12103T-PS	R12103T-PS
	4 (102)	Forged Steel	88	Tapered Roller	1 1/4 (32)	15000 (6750)	13 (330)	8 1/2 (216)	5/8 (16)	80.0 (56.0)	64.1 (28.8)	S12104T-FS	R12104T-FS
		Mold-on Rubber (Cast Iron Core)	74	Tapered Roller		1400 (630)				70.0 (31.5)	54.0 (24.3)	S12104T-MR	R12104T-MR
		Severe Duty Polyurethane	79	Tapered Roller		4200 (1890)				70.0 (31.5)	54.0 (24.3)	S12104T-PS	R12104T-PS
12 (305)	4 (102)	Mold-on Rubber (Cast Iron Core)	74	Tapered Roller	1 1/4 (32)	1600 (720)	15 (381)	9 1/2 (241)	5/8 (16)	75.0 (33.7)	60.0 (27.0)	S12124T-MR	R12124T-MR
		Severe Duty Polyurethane	79	Tapered Roller		4800 (2160)				74.0 (33.3)	59.0 (26.5)	S12124T-PS	R12124T-PS

SERIES DW DUAL WHEEL HOT FORGED

Capacities to 12,000 lbs.

Standard Features

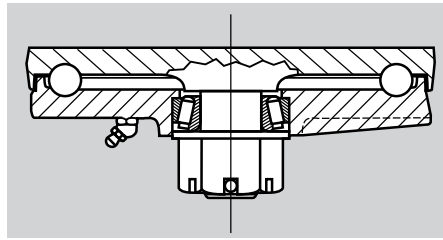
- **Top Plate & Yoke Base** - Drop forged from SAE-1045/1050 steel
- **Swivel Assembly** - Precision machined with flame hardened raceways, oversize ball bearings and a lateral tapered thrust bearing
- **King Pin** - Integral forged

Optional Features

- **Special Overall Heights** - See Continuous Towing Section and/or consult factory
- **Heavy Duty 1, 2, or 4 Position Swivel Lock** - (Suffix-1SL, -2SL, -4SL)
- **Secure Face Contact Brake** - (Suffix-FCB)
- **Special Wheel Materials For Severe Duty Applications**

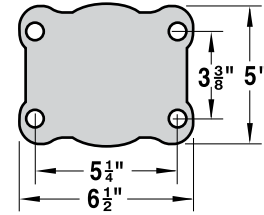


DWS 12124T-MR

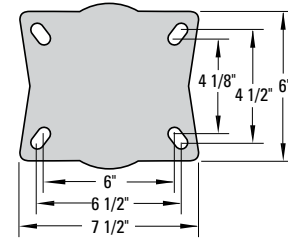


APPLICATIONS:
Used for heavy duty application where maximum load is required with minimum overall height. Also offers highest capacities coupled with floor protection.

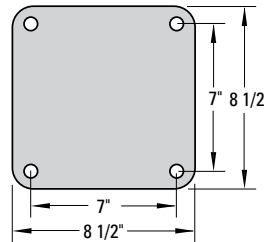
Top Plates



Series
DWS10
&
DWR10



Series
DWS11
&
DWR11



Series
DWS12
&
DWR12

Wheel Specifications						Caster Specifications					Part Number		
Dia. "A" Inches (mm)	Tread Inches (mm)	Wheel Composition	Ref. to Page	Bearing Type	Axle Dia. Inches (mm)	Load Capacity lbs. (KGS)	Overall Height "B" Inches (mm)	Swivel Radius Inches (mm)	Attach. Bolt Inches (mm)	Approx. Shipping Wt.		Swivel Caster	Rigid Caster
										Swivel lbs. (KGS)	Rigid lbs. (KGS)		
6 (152)	2 (50)	Severe Duty Polyurethane	79	Tapered Roller	3/4	2500 (1125)	8 1/2 (216)	5 1/2 (140)	1/2 (13)	25 (11.2)	20 (9.0)	DWS1062T-PS	DWR1062T-PS
		Mold-on Rubber (Cast Iron Core)	74	Tapered Roller	(19)	820 (373)				25 (11.2)	20 (9.0)	DWS1062T-MR	DWR1062T-MR
	2 1/2 (63)	Severe Duty Polyurethane	79	Tapered Roller	3/4	3000 (1350)	8 1/2 (216)	5 1/2 (140)	1/2 (13)	29 (13.0)	26 (12.0)	DWS10625T-PS	DWR10625T-PS
		Mold-on Rubber (Cast Iron Core)	74	Tapered Roller	(19)	1200 (540)				28 (12.6)	25 (11.2)	DWS10625T-MR	DWR10625T-MR
8 (204)	3 (76)	Severe Duty Polyurethane	79	Tapered Roller	3/4	4000 (1800)	11 (280)	6 1/2 (165)	1/2 (13)	52 (23.4)	44 (20.0)	DWS1183T-PS	DWR1183T-PS
		Mold-on Rubber (Cast Iron Core)	74	Tapered Roller	(19)	1700 (765)				51 (23.0)	43 (19.0)	DWS1183T-MR	DWR1183T-MR
		Severe Duty Polyurethane	79	Tapered Roller	1 1/4 (32)	5000 (2250)		5/8 (16)	69 (31.0)	54 (24.0)	DWS1283T-PS	DWR1283T-PS	
10 (254)	3 (76)	Severe Duty Polyurethane	79	Tapered Roller	3/4 (19)	5000 (2250)	12 1/2 (318)	8 (204)	1/2 (13)	75 (34.0)	66 (30.0)	DWS11103T-PS	DWR11103T-PS
	4 (102)	Severe Duty Polyurethane	79	Tapered Roller	1 1/4 (32)	8400 (3780)	13 (330)	8 1/2 (216)	5/8 (16)	101 (45.0)	85 (38.0)	DWS12104T-PS	DWR12104T-PS
		Mold-on Rubber (Cast Iron Core)	74	Tapered Roller	(32)	2900 (1305)				100 (45.0)	84 (38.0)	DWS12104T-MR	DWR12104T-MR
12 (305)	4 (102)	Severe Duty Polyurethane	79	Tapered Roller	1 1/4 (32)	9600 (4320)	15 1/2 (394)	9 1/2 (242)	5/8 (16)	115 (52.0)	101 (46.0)	DWS12124T-PS	DWR12124T-PS
		Mold-on Rubber (Cast Iron Core)	74	Tapered Roller	(32)	3200 (1440)				114 (51.0)	100 (45.0)	DWS12124T-MR	DWR12124T-MR