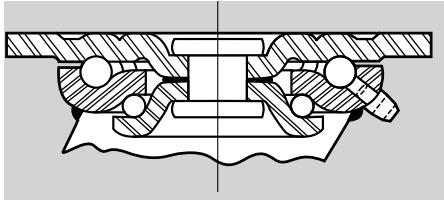


SERIES 1 MEDIUM DUTY

Capacities to 600 lbs.

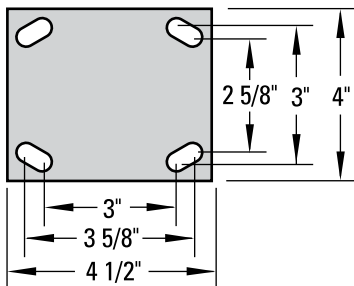
Standard Features

- **Swivel Casters** - Formed legs are continuously welded, top plate is cold forged from $\frac{1}{4}$ " steel and heat treated to relieve stress and add strength



- **Main Load Bearing** - Fully hardened $\frac{5}{16}$ " diameter ball bearings in a hardened raceway provide top performance under maximum rated loads
- **Thrust Bearing** - Large diameter, hardened ball bearings roll freely in a hardened raceway
- **King Pin** - Coined and stress relieved king pin holds raceways precisely in alignment
- **Wheel Bearings** - Roller bearing, or Delrin bearings are available when required
- **Lube Fittings** - Provided for both swivel and wheel bearings when required
- **Finish** - Zinc finish is standard

Standard Top Plate



S141R-MR

APPLICATION:

A good choice where application requires a basic wheel material and capacities of 600 lbs. or less.

The $3 \frac{1}{4}$ " wheel models are particularly well suited for applications where a high capacity is required with an extremely low overall height.

Optional Features

- **4 Position Swivel Lock** - (Suffix -SL)
- **Delrin Bearing** - (Change R to D)
Example: S141D-PH
- **Wheel Brake, Cam Style** - (Suffix -WB)

Cam Style Brake

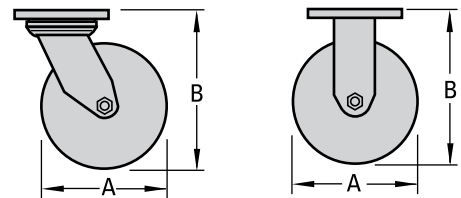


R141R-SS

4 Position Swivel Lock



| Wheel Specifications | | | | | | Caster Specifications | | | | | | Part Number | |
|----------------------|-------------------|---------------------------------|--------------|--------------|-----------------------|--------------------------|--------------------------------|---------------------------|--------------------------|----------------------|------------------|---------------|--------------|
| Dia. "A" Inches (mm) | Tread Inches (mm) | Wheel Composition | Ref. to Page | Bearing Type | Axle Dia. Inches (mm) | Load Capacity lbs. (KGS) | Overall Height "B" Inches (mm) | Swivel Radius Inches (mm) | Attach. Bolt Inches (mm) | Approx. Shipping Wt. | | Swivel Caster | Rigid Caster |
| | | | | | | | | | | Swivel lbs. (KGS) | Rigid lbs. (KGS) | | |
| 3 1/4 (83) | 1 1/2 (38) | Cast Iron | 86 | Roller | 1/2 (13) | 600 (270) | 4 1/4 (108) | 1 3/4 (44) | 3/8 (10) | 4.5 (2.0) | 4.0 (1.8) | S131R-SS | R131R-SS |
| | | Phenolic | 82 | Roller | | 600 (270) | | | | 3.0 (1.4) | 2.5 (1.13) | S131R-PH | R131R-PH |
| | | Mold-on Rubber (Cast Iron Core) | 74 | Roller | | 240 (108) | | | | 4.5 (2.0) | 4.0 (2.8) | S131R-MR | R131R-MR |
| | | Polyurethane (Cast Iron Core) | 78 | Roller | | 500 (225) | | | | 4.5 (2.0) | 4.0 (1.8) | S131R-PI | R131R-PI |
| 4 (102) | 1 1/2 (38) | Cast Iron | 86 | Roller | 1/2 (13) | 550 (248) | 5 5/8 (143) | 3 5/8 (92) | 3/8 (10) | 5.0 (2.3) | 4.5 (2.0) | S141R-SS | R141R-SS |
| | | Phenolic | 82 | Roller | | 600 (270) | | | | 3.5 (1.6) | 3.0 (1.4) | S141R-PH | R141R-PH |
| | | Mold-on Rubber | 74 | Roller | | 250 (113) | | | | 5.0 (2.3) | 4.5 (2.0) | S141R-MR | R141R-MR |
| | | Polyurethane (Cast Iron Core) | 78 | Roller | | 400 (180) | | | | 5.0 (2.3) | 4.5 (2.0) | S141R-PI | R141R-PI |
| | | Polyolefin (Blk) | 81 | Roller | | 400 (180) | | | | 3.5 (1.6) | 3.0 (1.4) | S141R-PB | R141R-PB |
| | | Polyolefin (Wt) | 81 | Delrin | | 350 (157) | | | | 3.5 (1.6) | 3.0 (1.4) | S141D-PW | R141D-PW |
| 5 (127) | 1 1/2 (38) | Cast Iron | 86 | Roller | 1/2 (13) | 600 (270) | 6 1/2 (165) | 4 1/2 (108) | 3/8 (10) | 5.5 (2.5) | 5.0 (2.3) | S151R-SS | R151R-SS |
| | | Phenolic | 82 | Roller | | 600 (270) | | | | 4.0 (1.8) | 3.5 (1.6) | S151R-PH | R151R-PH |
| | | Mold-on Rubber (Cast Iron Core) | 74 | Roller | | 250 (113) | | | | 5.5 (2.5) | 5.0 (2.3) | S151R-MR | R151R-MR |
| | | Polyurethane (Cast Iron Core) | 78 | Roller | | 450 (202) | | | | 5.5 (2.5) | 5.0 (2.3) | S151R-PI | R151R-PI |
| | | Polyolefin (Blk) | 81 | Roller | | 450 (202) | | | | 4.0 (1.8) | 3.5 (1.6) | S151R-PB | R151R-PB |
| | | Polyolefin (Wt) | 81 | Delrin | | 400 (180) | | | | 4.0 (1.8) | 3.5 (1.6) | S151D-PW | R151D-PW |
| 6 (152) | 1 1/2 (38) | Cast Iron | 86 | Roller | 1/2 (13) | 600 (270) | 7 1/2 (191) | 5 (127) | 3/8 (10) | 6.5 (2.9) | 6.0 (2.7) | S161R-SS | R161R-SS |
| | | Phenolic | 82 | Roller | | 600 (270) | | | | 5.5 (2.5) | 5.0 (2.3) | S161R-PH | R161R-PH |
| | | Mold-on Rubber (Cast Iron Core) | 74 | Roller | | 300 (135) | | | | 6.5 (2.9) | 6.0 (2.7) | S161R-MR | R161R-MR |
| | | Polyurethane (Cast Iron Core) | 78 | Roller | | 550 (248) | | | | 6.5 (2.9) | 6.0 (2.7) | S161R-PI | R161R-PI |
| | | Polyolefin (Blk) | 81 | Roller | | 450 (202) | | | | 5.5 (2.5) | 5.0 (2.3) | S161R-PB | R161R-PB |
| | | Polyolefin (Wt) | 81 | Delrin | | 400 (180) | | | | 5.5 (2.5) | 5.0 (2.3) | S161D-PW | R161D-PW |

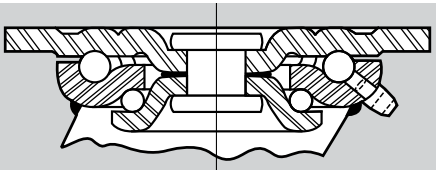


SERIES 1 MEDIUM HEAVY DUTY

Capacities to 1200 lbs.

Standard Features

- **Swivel Casters** - Formed legs are continuously welded, top plate is cold forged from 1/4" steel and heat treated to relieve stress and add strength
- **Main Load Bearing** - Fully hardened 5/16" diameter ball bearings in a hardened raceway provide top performance under maximum rated loads
- **Thrust Bearing** - Large diameter hardened ball bearings roll freely in a hardened raceway



- **King Pin** - 3/4" Coined and stress relieved king pin holds raceways precisely in alignment
- **Wheel Bearings** - Roller bearings are available standard for all wheel sizes
- **Finish** - Corrosion resistant zinc



S162R-PI



R162R-PB



- Pre-Notched raceway for field installable Swivel Lock
- **Lube Fittings** - Provided for both swivel and wheel bearings

Optional Features

- **Swivel Bearing Grease Seals** - (Suffix -GS)
- **Delrin Bearing** - (Change R to D)
Example: S162D-PH
- **4 Position Swivel Lock** - (Suffix -SL)
(plunger only part No.1SL-N)
- **Total Lock Brake** - (Suffix -TLB) Available on 4", 5", 6" & 8" diameters.
See page 104

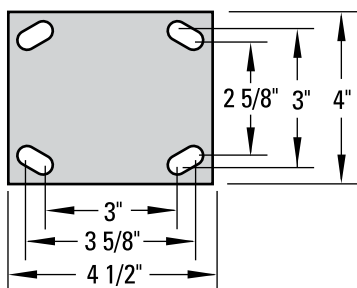
● Wheel Brake - (Suffix -WB)

- 4" to 8" Swivel Brake - Tread contact type. Brake shoe grips across and into tread for secure hold: field installable (see price list for brake kit)
- 3 1/4" Swivel Brake - Cam style. This brake utilizes a larger lever for effective cam action locking of the wheel. This style brake may also be adapted to rigid casters. Not field installable. (See page 104)

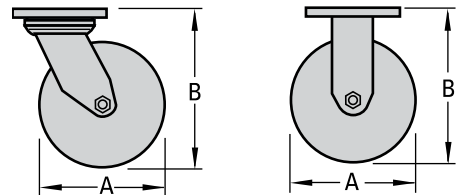
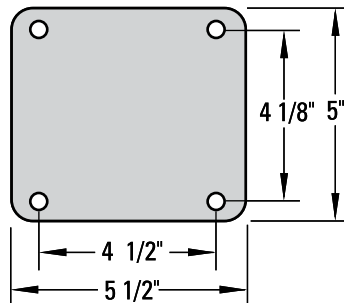
| Wheel Specifications | | | | | Caster Specifications | | | | | | Part Number | | |
|----------------------|-------------------|---------------------------------|--------------|--------------|-----------------------|--------------------------|--------------------------------|---------------------------|--------------------------|----------------------|------------------|---------------|--------------|
| Dia. "A" Inches (mm) | Tread Inches (mm) | Wheel Composition | Ref. to Page | Bearing Type | Axle Dia. Inches (mm) | Load Capacity lbs. (KGS) | Overall Height "B" Inches (mm) | Swivel Radius Inches (mm) | Attach. Bolt Inches (mm) | Approx. Shipping Wt. | | Swivel Caster | Rigid Caster |
| | | | | | | | | | | Swivel lbs. (KGS) | Rigid lbs. (KGS) | | |
| 3 1/4 (82) | 2 (50) | Cast Iron | 86 | Roller | 1/2 (13) | 700 (315) | 4 1/4 (108) | 3 3/8 (86) | 3/8 (10) | 7.4 (3.3) | 6.9 (3.2) | S132R-SS | R132R-SS |
| | | Phenolic | 82 | Roller | | 700 (315) | | | | 5.5 (2.5) | 5.0 (2.3) | S132R-PH | R132R-PH |
| | | Mold-on Rubber (Cast Iron Core) | 74 | Roller | | 240 (108) | | | | 7.4 (3.3) | 6.9 (3.2) | S132R-MR | R132R-MR |
| | | Polyurethane (Steel Core) | 78 | Roller | | 500 (225) | | | | 7.4 (3.3) | 6.9 (3.2) | S132R-PI | R132R-PI |
| 4 (102) | 2 (50) | Cast Iron | 86 | Roller | 1/2 (13) | 800 (360) | 5 5/8 (143) | 3 3/4 (92) | 3/8 (10) | 8.5 (3.8) | 8.0 (3.6) | S142R-SS | R142R-SS |
| | | Phenolic | 82 | Roller | | 800 (360) | | | | 6.0 (2.7) | 5.5 (2.5) | S142R-PH | R142R-PH |
| | | Mold-on Rubber (Cast Iron Core) | 74 | Roller | | 350 (157) | | | | 8.5 (3.8) | 8.0 (3.6) | S142R-MR | R142R-MR |
| | | Polyurethane (Cast Iron Core) | 78 | Roller | | 700 (315) | | | | 8.5 (3.8) | 8.0 (3.6) | S142R-PI | R142R-PI |
| | | Polyurethane (Alum. Core) | 75 | Roller | | 800 (360) | | | | 6.5 (2.9) | 6.0 (2.7) | S142R-PA | R142R-PA |
| | | Solid Urethane | 77 | Roller | | 700 (315) | | | | 6.5 (2.9) | 6.0 (2.7) | S142R-KT | R142R-KT |
| | | Polyurethane (Polyolefin Core) | 80 | Roller | | 700 (315) | | | | 6.0 (2.7) | 5.5 (2.5) | S142R-PP | R142R-PP |
| | | Polyolefin (Blk) | 81 | Roller | | 450 (202) | | | | 5.5 (2.5) | 5.0 (2.3) | S142R-PB | R142R-PB |
| | | Polyolefin (Wt) | 81 | Delrin | | 450 (202) | | | | 5.5 (2.5) | 5.0 (2.3) | S142D-PW | R142D-PW |
| | 1 1/2 (38) | Forged Steel | 88 | Roller | | 900 (405) | | | | 8.5 (3.8) | 8.0 (3.6) | S141R-FS | R141R-FS |

| Wheel Specifications | | | | | | Caster Specifications | | | | | | Part Number | |
|----------------------|-------------------|---------------------------------|--------------|--------------|-----------------------|--------------------------|--------------------------------|---------------------------|--------------------------|----------------------|------------------|---------------|--------------|
| Dia. "A" Inches (mm) | Tread Inches (mm) | Wheel Composition | Ref. to Page | Bearing Type | Axle Dia. Inches (mm) | Load Capacity lbs. (KGS) | Overall Height "B" Inches (mm) | Swivel Radius Inches (mm) | Attach. Bolt Inches (mm) | Approx. Shipping Wt. | | Swivel Caster | Rigid Caster |
| | | | | | | | | | | Swivel lbs. (KGS) | Rigid lbs. (KGS) | | |
| 5 (127) | 2 (50) | Cast Iron | 86 | Roller | 1/2 (13) | 900 (405) | 6 1/2 (165) | 4 1/4 (108) | 3/8 (10) | 8.8 (4.0) | 8.3 (3.7) | S152R-SS | R152R-SS |
| | | Phenolic | 82 | Roller | | 900 (405) | | | | 6.5 (3.0) | 6.0 (2.7) | S152R-PH | R152R-PH |
| | | Mold-on Rubber (Cast Iron Core) | 74 | Roller | | 400 (180) | | | | 8.8 (4.0) | 8.3 (3.7) | S152R-MR | R152R-MR |
| | | Polyurethane (Cast Iron Core) | 78 | Roller | | 900 (405) | | | | 8.8 (4.0) | 8.3 (3.7) | S152R-PI | R152R-PI |
| | | Polyurethane (Alum. Core) | 75 | Roller | | 900 (405) | | | | 7.0 (3.2) | 6.5 (3.0) | S152R-PA | R152R-PA |
| | | Solid Urethane | 77 | Roller | | 900 (405) | | | | 7.0 (3.2) | 6.5 (3.0) | S152R-KT | R152R-KT |
| | | Polyurethane (Polyolefin Core) | 80 | Roller | | 750 (337) | | | | 6.5 (3.0) | 6.0 (2.7) | S152R-PP | R152R-PP |
| | | Santoprene (Polyolefin Core) | 72 | Roller | | 450 (202) | | | | 6.5 (3.0) | 6.0 (2.7) | S152R-SP | R152R-SP |
| | | Polyolefin (Blk) | 81 | Roller | | 650 (292) | | | | 6.0 (2.7) | 5.5 (2.5) | S152R-PB | R152R-PB |
| | | Polyolefin (Wt) | 81 | Delrin | | 600 (270) | | | | 6.0 (2.7) | 5.5 (2.5) | S152D-PW | R152D-PW |
| | | Forged Steel | 88 | Roller | | 1200 (540) | | | | 8.8 (4.0) | 8.3 (3.7) | S152R-FS | R152R-FS |
| 6 (152) | 2 (50) | Cast Iron | 86 | Roller | 1/2 (13) | 900 (405) | 7 1/4 (184) | 5 (127) | 3/8 (10) | 9.0 (4.1) | 8.5 (3.6) | S162R-SS | R162R-SS |
| | | Phenolic | 82 | Roller | | 900 (405) | | | | 7.0 (3.2) | 6.0 (2.7) | S162R-PH | R162R-PH |
| | | Mold-on Rubber (Cast Iron Core) | 74 | Roller | | 410 (184) | | | | 9.0 (4.1) | 8.0 (3.6) | S162R-MR | R162R-MR |
| | | Polyurethane (Cast Iron Core) | 78 | Roller | | 900 (405) | | | | 9.0 (4.1) | 8.0 (3.6) | S162R-PI | R162R-PI |
| | | Polyurethane (Alum. Core) | 75 | Roller | | 900 (405) | | | | 7.5 (3.4) | 6.5 (2.9) | S162R-PA | R162R-PA |
| | | Solid Urethane | 77 | Roller | | 900 (405) | | | | 7.5 (3.4) | 6.5 (2.9) | S162R-KT | R162R-KT |
| | | Polyurethane (Polyolefin Core) | 80 | Roller | | 900 (405) | | | | 7.0 (3.2) | 6.0 (2.7) | S162R-PP | R162R-PP |
| | | Santoprene (Polyolefin Core) | 72 | Roller | | 550 (247) | | | | 7.0 (3.2) | 6.0 (2.7) | S162R-SP | R162R-SP |
| | | Polyolefin (Blk) | 81 | Roller | | 700 (315) | | | | 6.5 (2.9) | 5.5 (2.5) | S162R-PB | R162R-PB |
| | | Polyolefin (Wt) | 81 | Delrin | | 650 (292) | | | | 6.5 (2.9) | 5.5 (2.5) | S162D-PW | R162D-PW |
| | | Forged Steel | 88 | Roller | | 1200 (540) | | | | 9.3 (4.2) | 8.3 (3.7) | S162R-FS | R162R-FS |
| 8 (203) | 2 (50) | Cast Iron | 86 | Roller | 1/2 (13) | 1050 (473) | 9 1/2 (241) | 6 1/8 (156) | 3/8 (10) | 12.0 (5.4) | 11.0 (5.0) | S182R-SS | R182R-SS |
| | | Phenolic | 82 | Roller | | 900 (405) | | | | 8.5 (3.8) | 7.5 (3.4) | S182R-PH | R182R-PH |
| | | Mold-on Rubber (Cast Iron Core) | 74 | Roller | | 500 (225) | | | | 10.5 (4.5) | 9.0 (4.1) | S182R-MR | R182R-MR |
| | | Polyurethane (Cast Iron Core) | 78 | Roller | | 900 (405) | | | | 10.5 (4.7) | 9.5 (4.3) | S182R-PI | R182R-PI |
| | | Polyurethane (Alum. Core) | 75 | Roller | | 900 (405) | | | | 8.0 (3.6) | 7.0 (3.2) | S182R-PA | R182R-PA |
| | | Solid Urethane | 77 | Roller | | 1000 (450) | | | | 8.5 (3.8) | 7.5 (3.4) | S182R-KT | R182R-KT |
| | | Polyurethane (Polyolefin Core) | 80 | Roller | | 900 (405) | | | | 7.5 (3.4) | 6.5 (2.9) | S182R-PP | R182R-PP |
| | | Santoprene (Polyolefin Core) | 72 | Roller | | 700 (315) | | | | 7.5 (3.4) | 6.5 (2.9) | S182R-SP | R182R-SP |
| | | Polyolefin (Blk) | 81 | Roller | | 800 (360) | | | | 6.5 (2.9) | 5.5 (2.5) | S182R-PB | R182R-PB |
| | | Polyolefin (Wt) | 81 | Delrin | | 700 (315) | | | | 6.5 (2.9) | 5.5 (2.5) | S182D-PW | R182D-PW |

Standard Top Plate #1



Optional Top Plate #2



(Change 2nd character in part number)
Example: S262R-PH